



Picture Book Lifting Tongs

© 2020 Bushman Equipment, Inc. This presentation contains information that is **PROPRIETARY** and **CONFIDENTIAL** and must not be duplicated, used, or disclosed without the written consent of Bushman Equipment, Inc.

Lifting Tong Operation



Lower tong onto load. With tong resting on material, and hoist tension released, the latch automatically disengages from the locked open position.



Raise hoist to allow the tong pads to close onto load. Then lift or transport to desired location.



To release load, lower tong and place load on the ground to relieve tension. Latch will automatically lock grab in the open position. Hoist can then be raised to remove tong.



Supporting Tong

Supporting Tong





Lifting tong with no
automatic latch

32 TON
2000-18486-B

Pair of 35,000 lb capacity lifting tongs handle concrete containers.

CAPACITY 35,000 LBS
NET WEIGHT 8,480 LBS

CAPACITY 35,000 LBS
NET WEIGHT 8,480 LBS

10. 11/10-10-10
11/10-10-10
NET TARE WEIGHT 10,000 LBS
LTD TARE WEIGHT 5,500 LBS
1000 & LTD TARE WEIGHT 24,000 LBS
STANDARD PAYLOAD WEIGHT 10,000 LBS STACK- 3 HIGH
MAXIMUM PAYLOAD WEIGHT 10,000 LBS STACK- 2 HIGH



**Supporting tong- 3-leg tong
to lift 55 gallon drums.
Lifts under the rim.**



3-leg tong to lift welded steel frames



3-leg tong to lift welded steel frames



1,000 lb Heliostat reflector lifter



60 ton die Lifter



Supporting Tong



4.5 ton reel lifter



4.5 ton reel lifter



40 T gripping tong



Gripping tong with rubber pads



1,500 lb capacity gripping tong with rubber pads for varying diameters.



Gripping tong- low
capacity, large diameter



(6) 300 lb tongs



**200 lb capacity gripping
tong for varying diameters.**



**6 ton roll tong designed
to attach to a fork truck.**



Ingot tong- gripping



12 ton billet tong with bail
to fit on large crane hook.



22.5 ton ingot tong



45 ton billet tong



LB.CAP.60000

BUSHMAN
EQUIPMENT, INC.

**30 ton hot billet tong
with hardened bits**



**1,500 lb tong with hardened
tip gripping teeth**



Gripping tong- hand
wheel operated



Billet tongs on a common spreader beam



15 TON CAP.

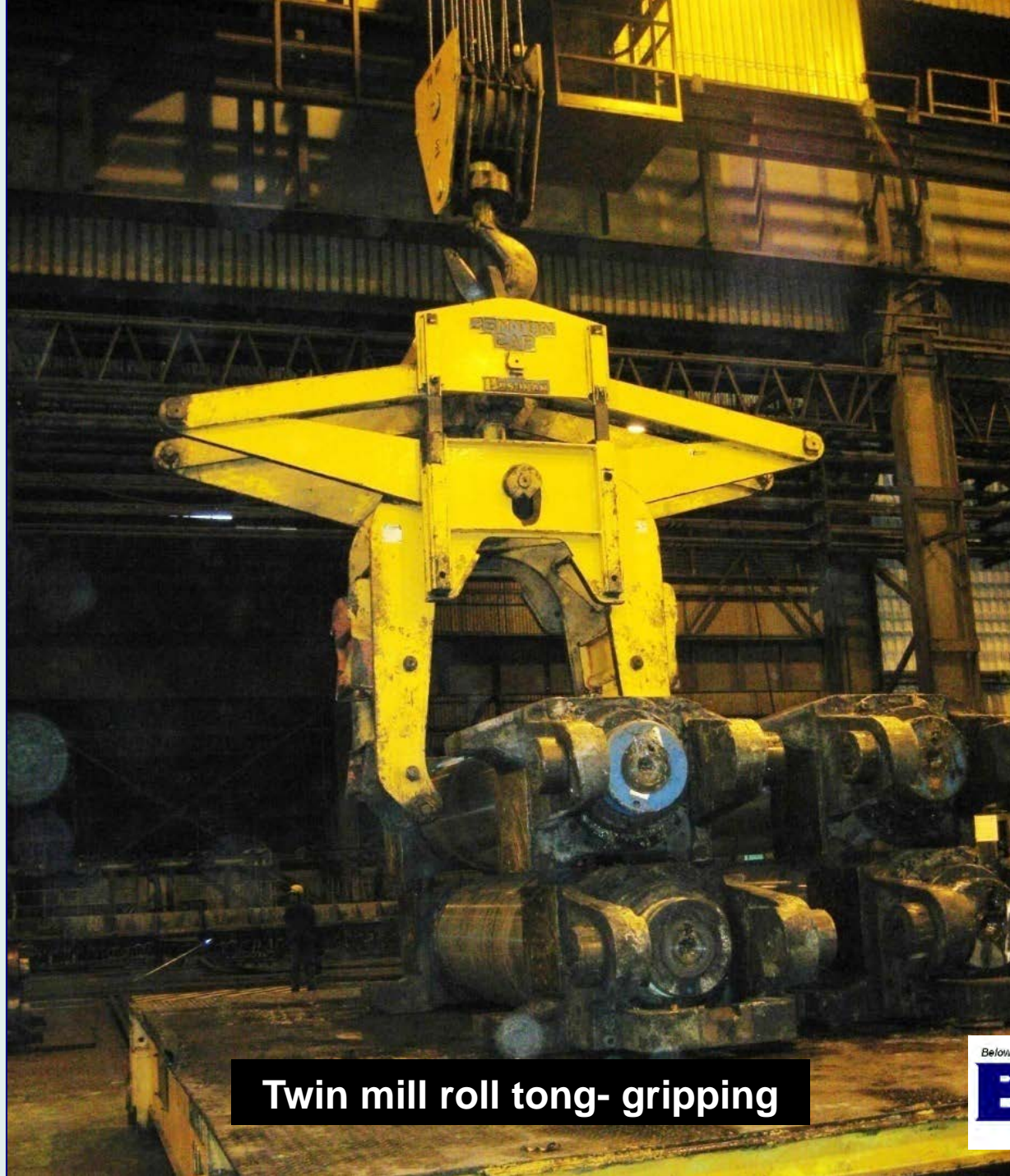
BUSHMAN
EQUIPMENT, INC.

**Mill roll tong with chock
stabilizers- gripping**

Below-The-Hook Material Handling Specialists
BUSHMAN
EQUIPMENT, INC.



**20 MT mill roll tong with
chock stabilizers**



Twin mill roll tong- gripping



35M TON
CAP

BUSHMAN

35 ton twin
mill roll tong

Below-The-Hook Material Handling Specialists
BUSHMAN
EQUIPMENT, INC.



JBS
Cranes
800-942-5272

BUSHMAN

40 TON

WARNING
Pinch Point
Stay clear!

35 ton twin mill roll tong

Twin mill roll tong. Picks up a two-roll set. Hand wheel allows grip range to be adjusted.





Dual Gripping Tong
(Bradley Lifting Corp is a
sister company to Bushman)



Dual gripping tongs on one spreader beam



15 ton multi-roll paper tong



Pipe tong- gripping



Pipe tong- dual hook, single latch- gripping



Non-concentric tong- gripping



Box tong- pressure



Paper roll clamp- pressure



Paper clamp- pressure



6 ton paper roll clamp



Paper tong- pressure



Pressure tong- lifting refractory blocks



**Pressure tong designed
to fit onto fork truck**



Aluminum bail lifting tong- pressure



**100 lb capacity tong to lift spools
of plastic tubing- see gripping pad**



Billet tong with hardened points- pressure



7,000 lb plate tong

Below-The-Hook Material Handling Specialists

BUSHMAN
EQUIPMENT, INC.



20,000 lb capacity slab tong
with UHMW wear pads.





WARNING
Pinch Point
Stay clear!

SAFETY
Do not
lubricate
the latch

WARNING
Pinch Point
Stay clear!

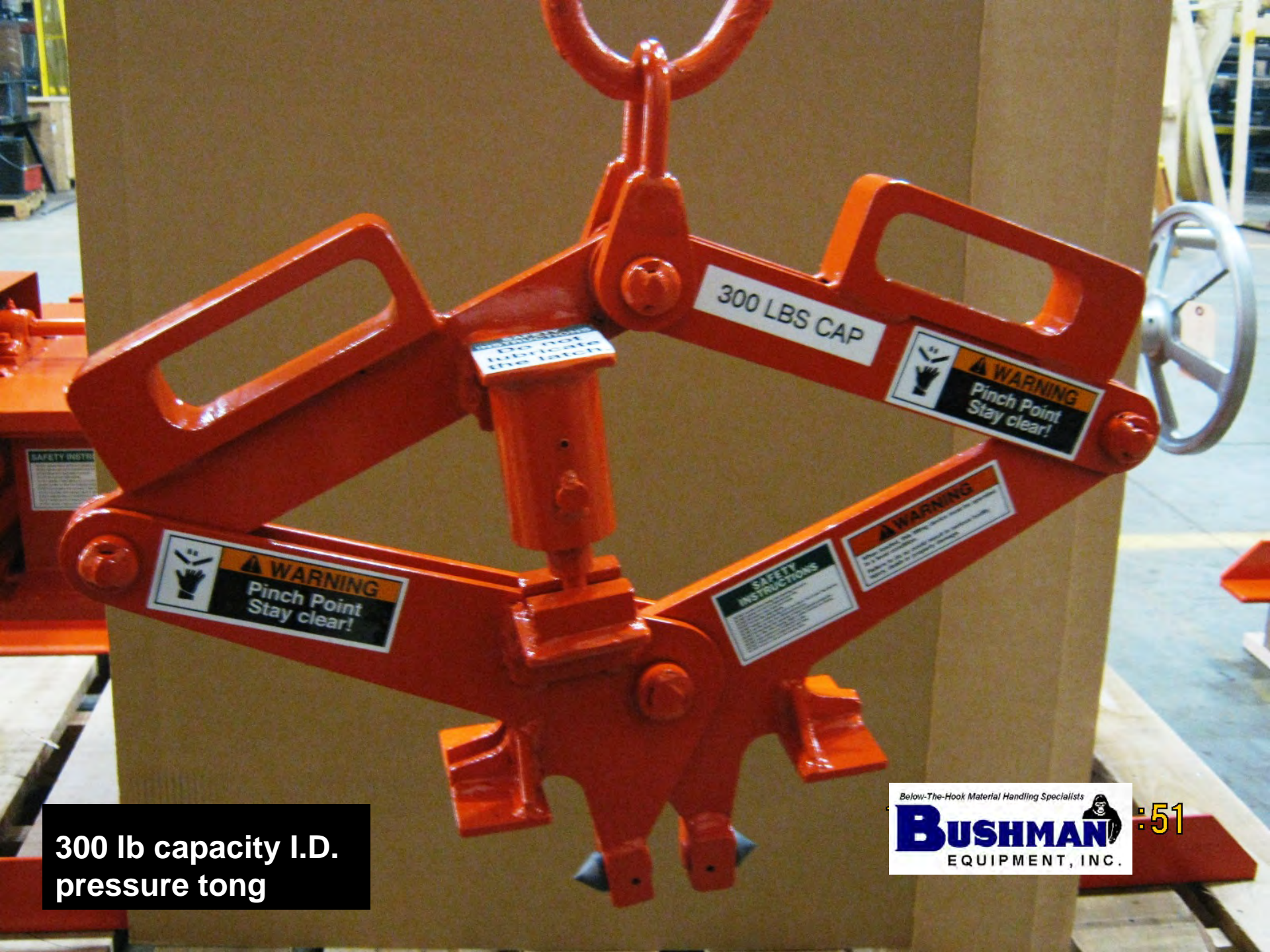
SAFETY INSTRUCTIONS

WARNING
Before operation, check
that the pressure tong is
properly secured to the
load. Do not use the
tong to lift or move
loads that are not
properly secured.

1 1/2 TON

WARNING
Pinch Point
Stay clear!

**3,000 lb capacity pressure
tong lifts fiberglass molds**



300 lb capacity I.D.
pressure tong



**Pressure tong lifts 35 ton
loads of (4) steel slabs**



39 ton slab tong- pressure



39 ton slab tong- pressure



Hoist-actuated slab tong-pressure. (non-Bushman)



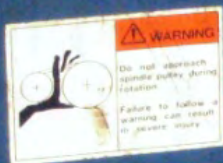
Soaking pit tong with
motorized vertical axis
rotation



**Pressure tong- lifts
steel billets vertically**



**Model 1070 tong to
pick up castings**



3-Leg pressure tong



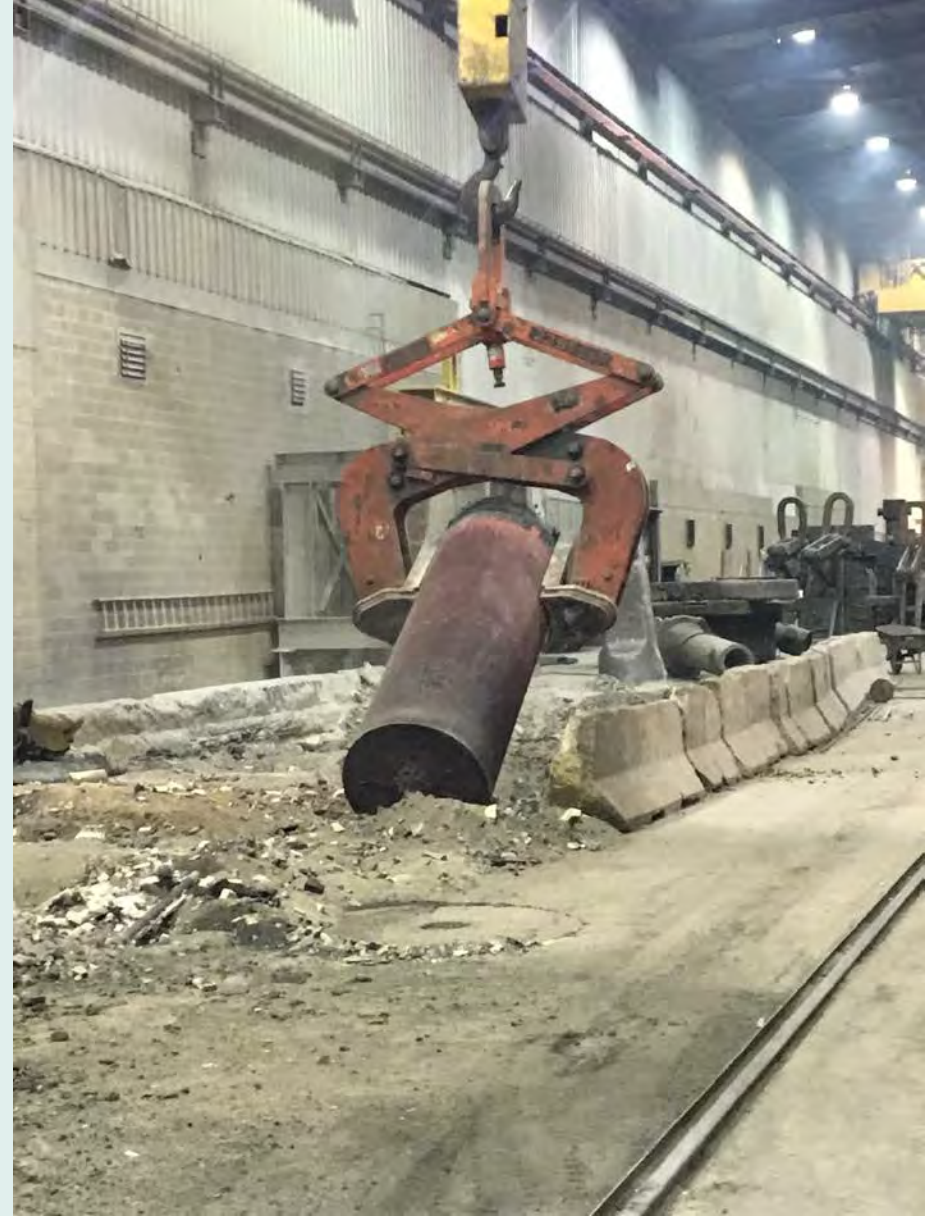
300 lb 3-leg tong

Ingot lay-down tongs- pressure





**45,000 lb billet lay down
tong, 21" to 36" dia, 1500F
hot billets.**



22.5 ton hot ingot laydown tong



12 ton billet
laydown grab



7-Pin Swivel Tong
(Bradley Lifting Corp is a
sister company to Bushman)



**Talley Metals, McBee, SC
3 ton air-actuated tong**