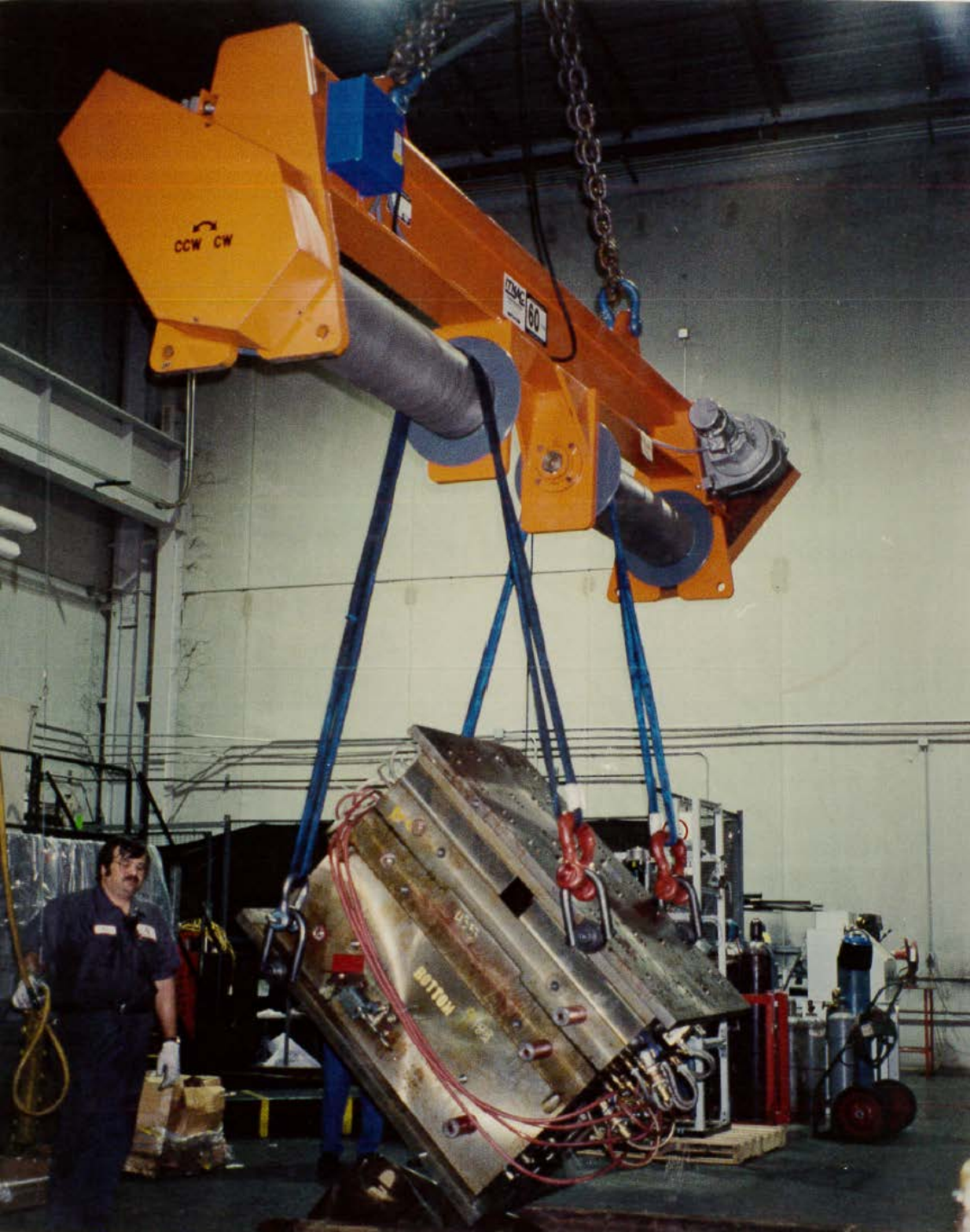


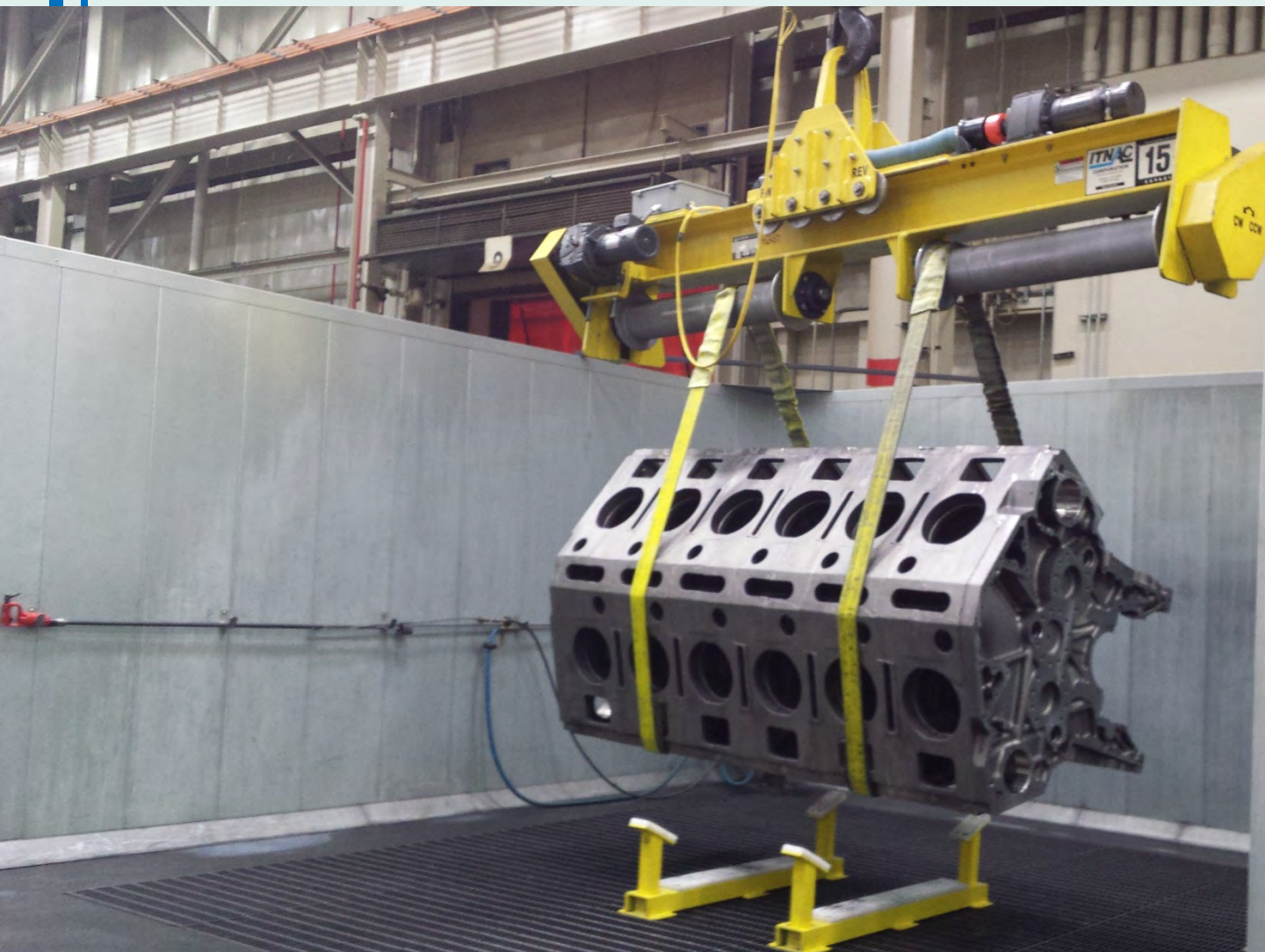


Picture Book ITNAC® Flip-Rite®

© 2020 Bushman Equipment, Inc. This presentation contains information that is **PROPRIETARY** and **CONFIDENTIAL** and must not be duplicated, used, or disclosed without the written consent of Bushman Equipment, Inc.



**Flip-Rite® for flipping
plastic injection molds
for maintenance**



Flip-Rite® use for machine assembly



**Flip-Rite® for heavy
weld repair shop**



**Metal plate inspection- Use
Flip-Rite® to inspect
underside**



**Flip-Rite® in foundry
for flipping mold boxes**

Flip-Rite® for truck trailer assembly



Below-The-Hook Material Handling Specialists

BUSHMAN
EQUIPMENT, INC.



**Flip-Rite® can handle delicate
loads with open sides.**



**Flip-Rite® can handle slight
tapers and open sides**



18T x 36 ft long Flip-Rite® with two drums and three lifting bails (for use with one or two cranes)



18T x 36 ft long Flip-Rite® with two drums and three lifting bails (for use with one or two cranes)



Flip-Rite®, 20 ton x 13 ft
with motorized leveler



**27.5T Flip-Rite® with (4) drums used
in commercial aircraft manufacturing**



**10T (combined) Flip-Rite® modules
designed to attach to twin hoist hooks**

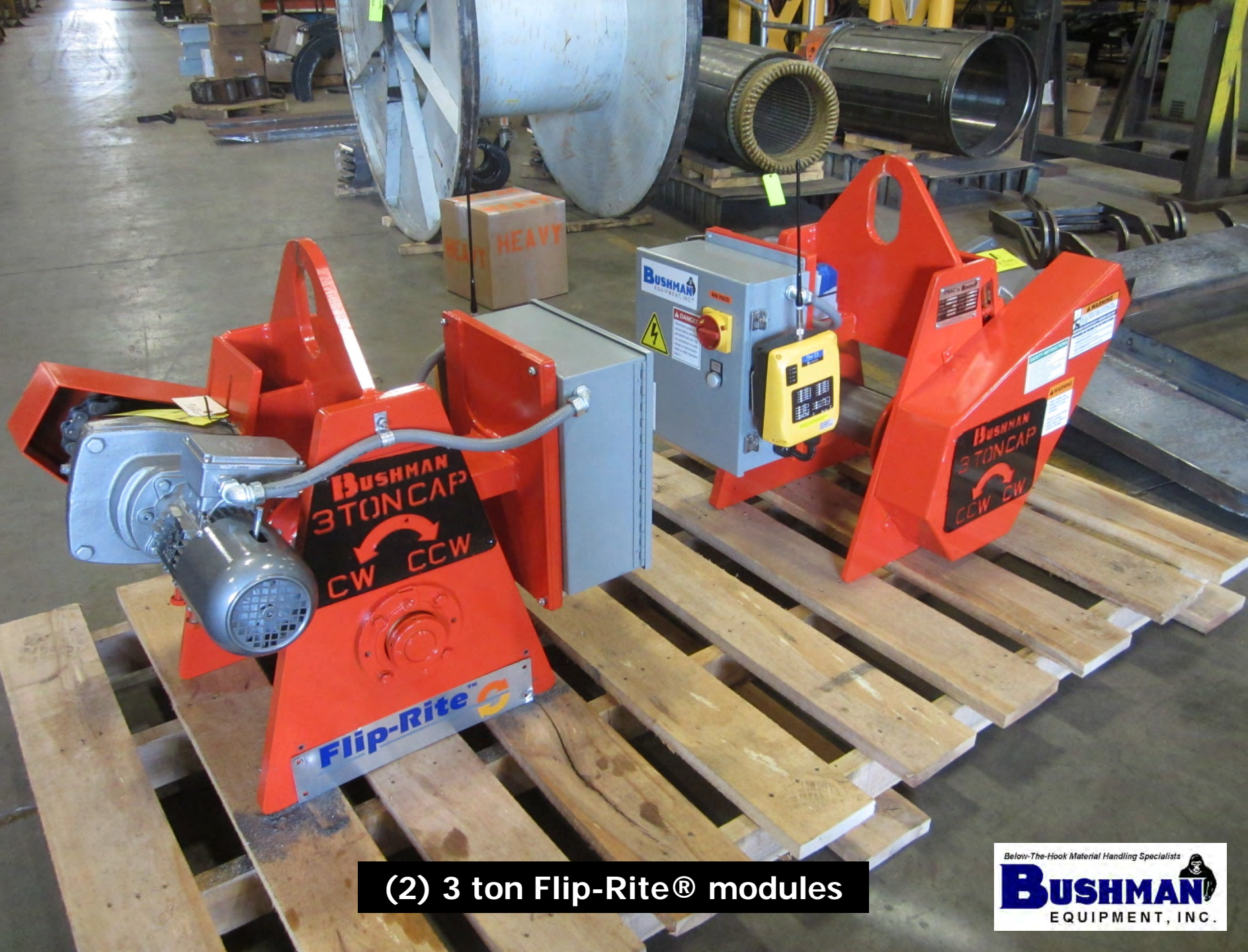




**1150 lb capacity Flip-Rite® with
casters and tow bar for easy
movement to different crane bays**



**1T Flip-Rite® with urethane coated
drum and strap collars**



(2) 3 ton Flip-Rite® modules



**Flip-Rite® modules for
bus frame fabrication**



Flipping fiberglass boat tops



**Flip-Rite® for rail car
fabrication**



**70 ton combined capacity Flip-Rite® modules
used for weld positioning in heavy fab shop.**



**7.5 ton combined capacity Flip-Rite® modules
used for weld positioning in heavy fab shop.**



**10 ton combined capacity Flip-Rite® modules
used for rotating welded trailer frames**



**100T (combined) Flip-Rite® modules
used in heavy fabrication shop**



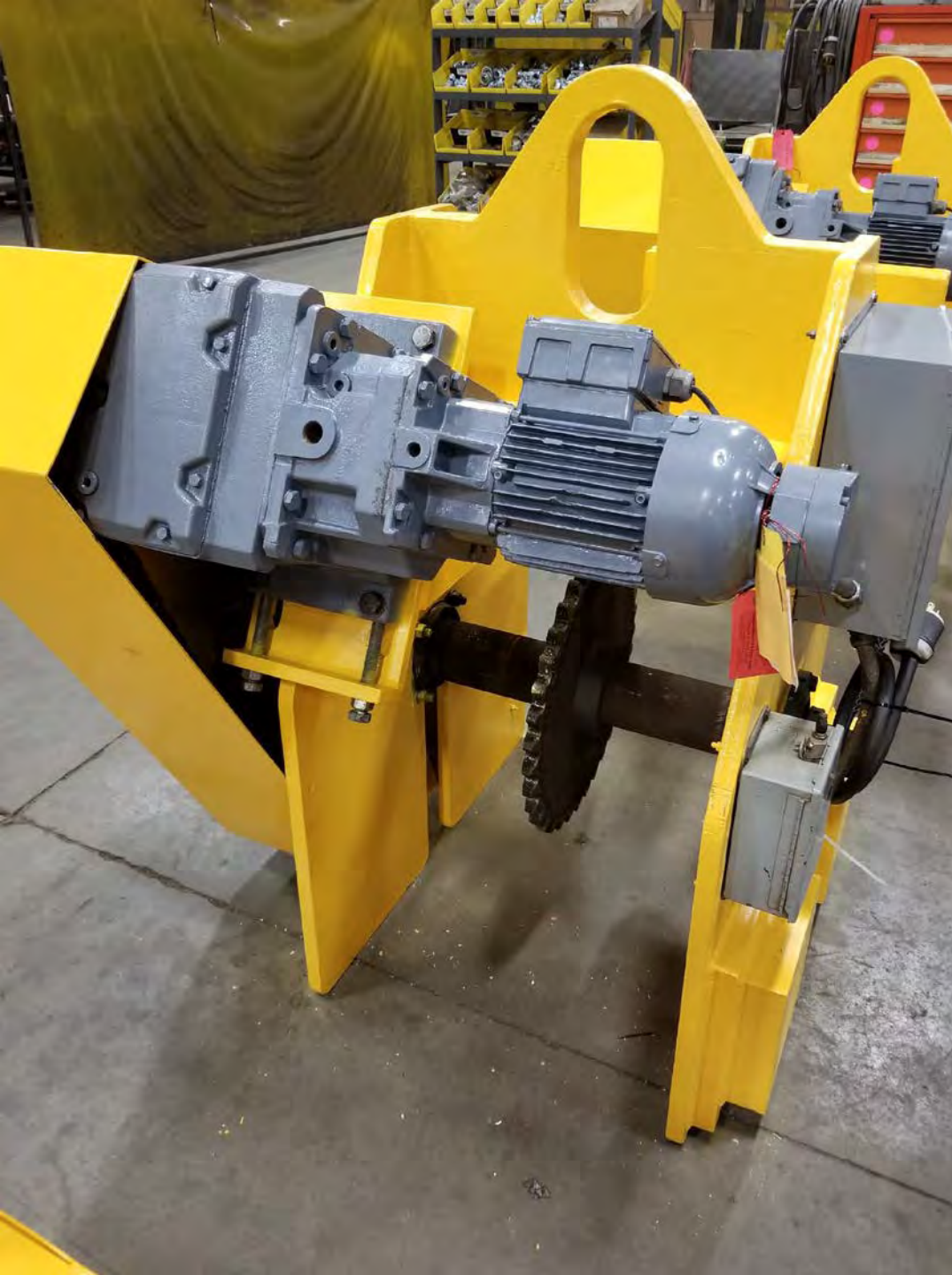
100T (combined) Flip-Rite® modules
used in heavy fabrication shop



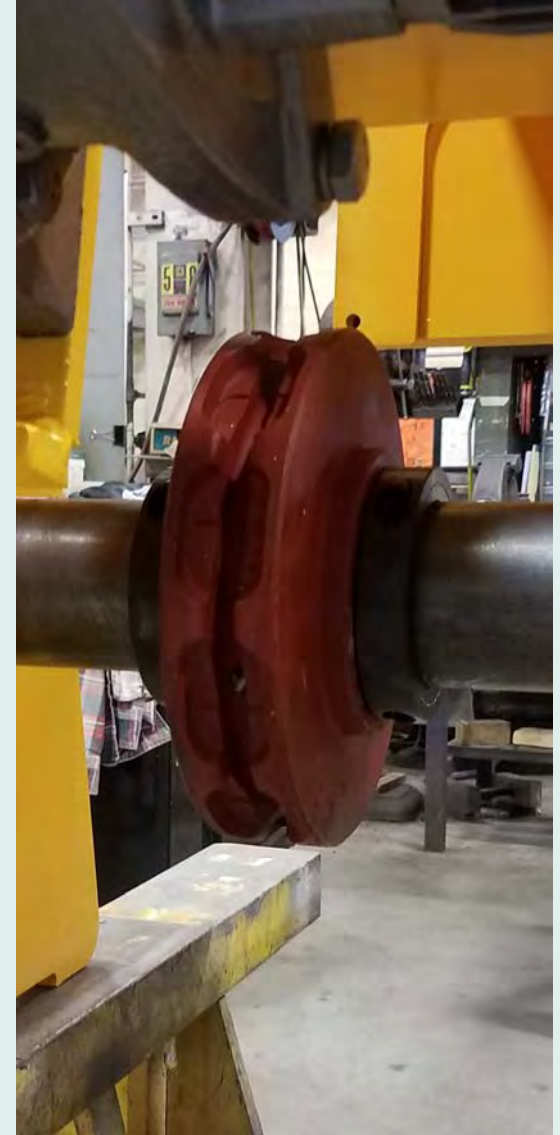


100T (combined) Flip-Rite® modules
used in heavy fabrication shop





**Flip-Rite® modules with
sprocket for roller chain**



Flip-Rite® modules with pocket wheel for lifting chain